

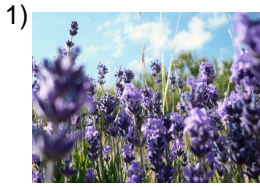
Name: \_\_\_\_\_

Date: \_\_\_\_\_

**Word Match Quiz for Category: colors**

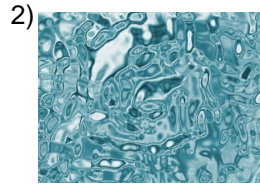
Fill each blank with the matching word that corresponds to it from up top.

Words to Match: azul - blanco - blanco - café, castaño - rosada - morado - lila - encarnado - verde - verde - naranja - colorido - fucsia - celeste - oscuro - claro - plateado - gris - marrón - sobrio - violeta - grisear - amarillo - gris - amarillo pálido - bordo - oro - tenue - rojo - turquesa - color firme - rosado



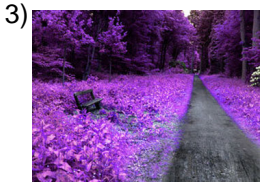
lavander, lilac

\_\_\_\_\_



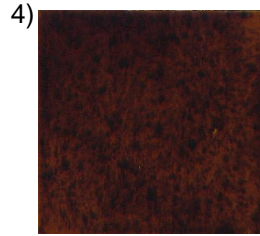
light, clear

\_\_\_\_\_



purple

\_\_\_\_\_



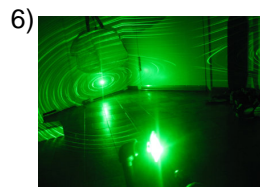
brown

\_\_\_\_\_



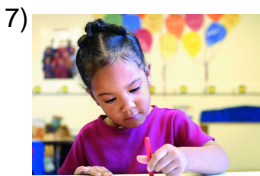
pink

\_\_\_\_\_



green

\_\_\_\_\_



colorful

\_\_\_\_\_



violet

\_\_\_\_\_

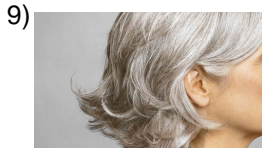
Name: \_\_\_\_\_

Date: \_\_\_\_\_

**(continued) Word Match Quiz for Category: colors**

Fill each blank with the matching word that corresponds to it from up top.

Words to Match: azul - blanco - blanco - café, castaño - rosada - morado - lila - encarnado - verde - verde - naranja - colorido - fucsia - celeste - oscuro - claro - plateado - gris - marrón - sobrio - violeta - grisear - amarillo - gris - amarillo pálido - bordo - oro - tenue - rojo - turquesa - color firme - rosado



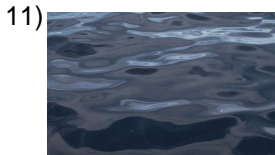
to become grey

\_\_\_\_\_



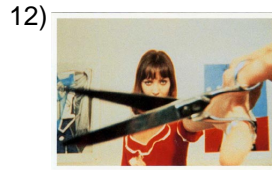
yellow

\_\_\_\_\_



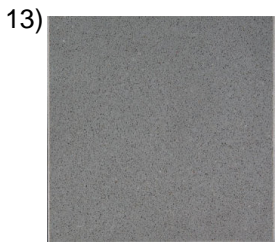
dark (m)

\_\_\_\_\_



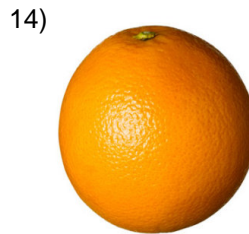
quiet (color)

\_\_\_\_\_



grey

\_\_\_\_\_



orange

\_\_\_\_\_



brown (hair)

\_\_\_\_\_



burgundy

\_\_\_\_\_

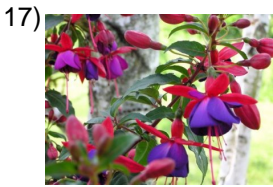
Name: \_\_\_\_\_

Date: \_\_\_\_\_

**(continued) Word Match Quiz for Category: colors**

Fill each blank with the matching word that corresponds to it from up top.

Words to Match: azul - blanco - blanco - café, castaño - rosada - morado - lila - encarnado - verde - verde - naranja - colorido - fucsia - celeste - oscuro - claro - plateado - gris - marrón - sobrio - violeta - grisear - amarillo - gris - amarillo pálido - bordo - oro - tenue - rojo - turquesa - color firme - rosado



fuchsia

\_\_\_\_\_



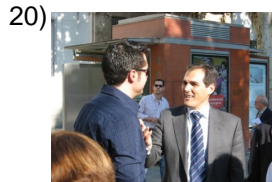
light yellow

\_\_\_\_\_



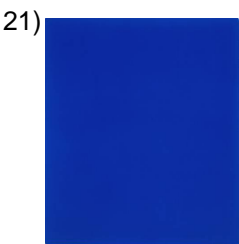
white

\_\_\_\_\_



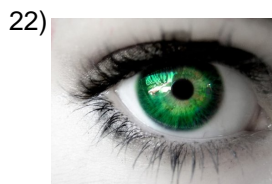
tenuous

\_\_\_\_\_



blue

\_\_\_\_\_



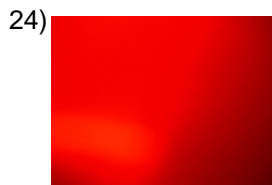
green

\_\_\_\_\_



turquoise

\_\_\_\_\_



red

\_\_\_\_\_

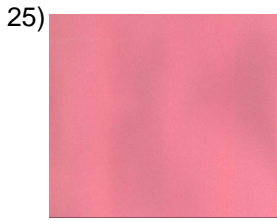
Name: \_\_\_\_\_

Date: \_\_\_\_\_

**(continued) Word Match Quiz for Category: colors**

Fill each blank with the matching word that corresponds to it from up top.

Words to Match: azul - blanco - blanco - café, castaño - rosada - morado - lila - encarnado - verde - verde - naranja - colorido - fucsia - celeste - oscuro - claro - plateado - gris - marrón - sobrio - violeta - grisear - amarillo - gris - amarillo pálido - bordo - oro - tenue - rojo - turquesa - color firme - rosado



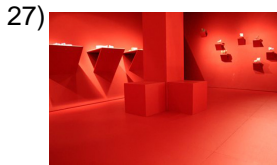
pink

\_\_\_\_\_



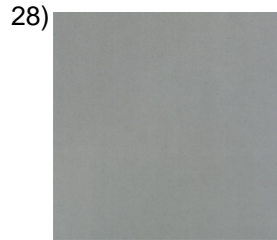
white

\_\_\_\_\_



red

\_\_\_\_\_



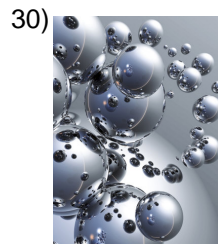
gray

\_\_\_\_\_



light blue

\_\_\_\_\_



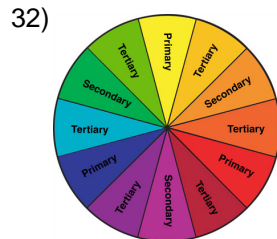
silver

\_\_\_\_\_



gold

\_\_\_\_\_



maintains color

\_\_\_\_\_

Name: \_\_\_\_\_

Date: \_\_\_\_\_

### **Answer Key for Worksheet 5a063**

#### *Word Match Quiz starting on page 1*

1 = lila , 2 = claro , 3 = morado , 4 = marrón , 5 = rosada , 6 = verde , 7 = colorido , 8 = violeta , 9 = grisear , 10 = amarillo , 11 = oscuro , 12 = sobrio , 13 = gris , 14 = naranja , 15 = café, castaño , 16 = bordo , 17 = fucsia , 18 = amarillo pálido , 19 = blanco , 20 = tenue , 21 = azul , 22 = verde , 23 = turquesa , 24 = rojo , 25 = rosado , 26 = blanco , 27 = encarnado , 28 = gris , 29 = celeste , 30 = plateado , 31 = oro , 32 = color firme